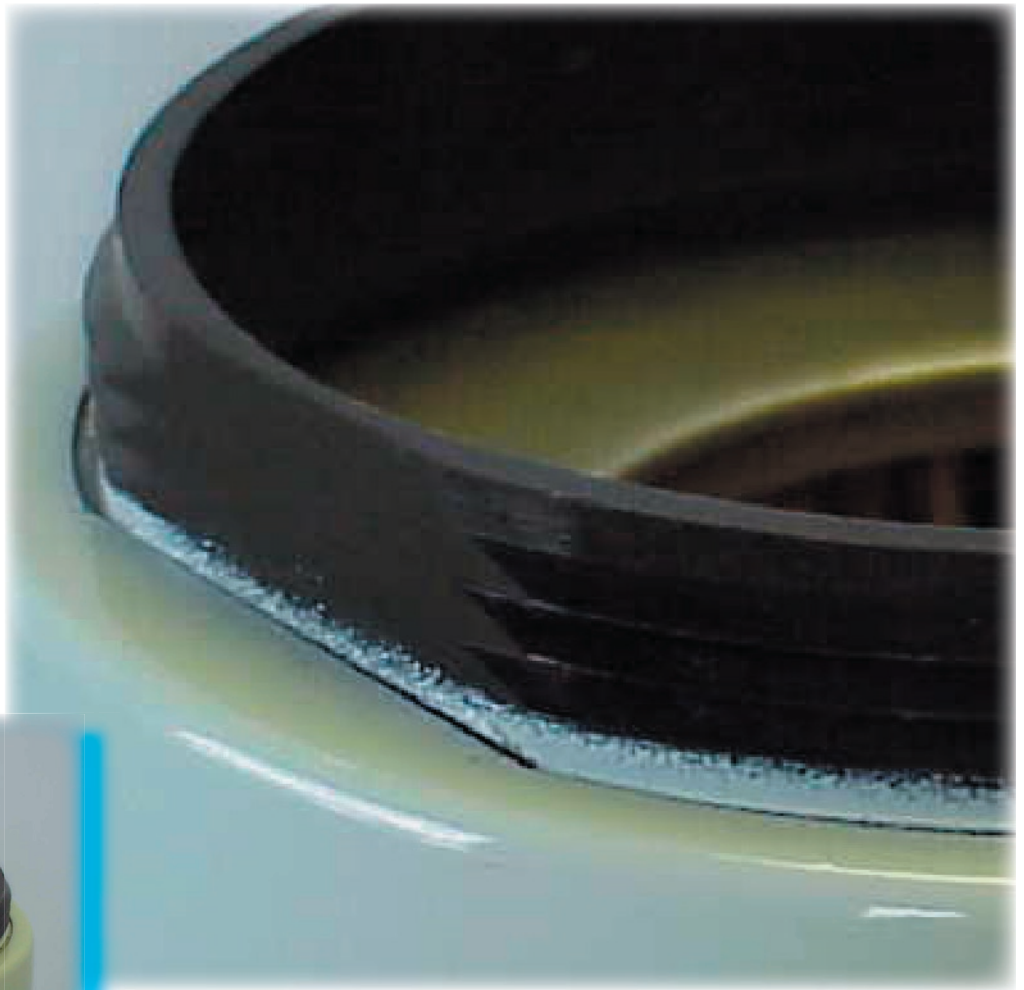


Product Update Bulletin

Part Numbers 86231, 86217, and 86232 have recently undergone some design upgrades that change the appearance of the products somewhat. The area affected is the threaded component that the filter's bowl spins on to.

The new design utilizes two opposing “flats” molded into the base of the threads and cut into the filter's can. This design will not allow the threaded lid to rotate during installation or removal.



The previous design of these filters required the threads to be glued to the can. With this product upgrade, the threads are more securely attached to the filter assembly, can not be adversely effected by environmental conditions such as extreme temperatures, and ensure trouble free bowl installation and removal.

Extensive laboratory testing that included Cycle Pressure Leak/Fatiuge Testing and Static Burst Testing has been conducted on this design. Also, comprehensive field testing in the “real world” has been conducted on this design. All testing and evaluation of this design have confirmed its advantages and improved filter durability.