



Vehicle Maintenance
Course Profile



Seat Time

0.5 - 1 hour, self-paced

Course Audience

Any automotive service professional requiring additional information and training on tire service and repair

Course Description

This course will introduce learners to the basics of identifying and repairing tire related concerns. Users will learn how to inspect tires, properly remove and install tires, mount and dismount tires, repair tire punctures and identify non-repairable tire damage.

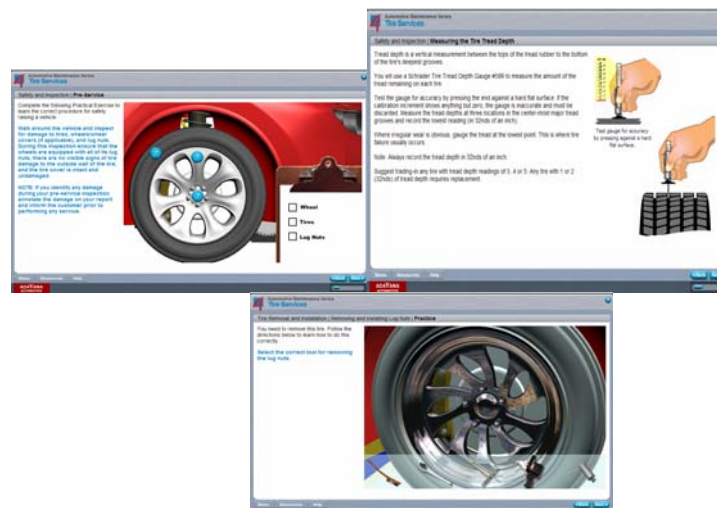
Course Topics

- Safety and Inspection
- Tire Removal and Installation
- Tire Mounting and Dismounting
- Tire Repair

Course Objectives

In this course, users will learn to:

- Follow the necessary safety procedures and perform pre-service operations
- Complete a full tire inspection using proper techniques
- Identify and use the tools involved in tire removal and installation
- Remove and install wheel covers and lug nuts
- Properly remove and mount a tire on the wheel
- Handle custom wheels in order to prevent damage
- Identify repairable and non-repairable tire damage
- Identify the tools needed to perform a tire repair
- Perform a one or two-piece tire repair





Vehicle Maintenance
Course Profile



Training Outcomes

- Provides an effective training message that reinforces consistent and accurate tire service processes and procedures
- Improves the quality of tire service
- Increases the productivity of new and existing technicians performing vehicle maintenance

Course Features

- Global navigation
- Practice pages with multiple choice, drag 'n drop, true/false
- Interactive and animated content pages
- Glossary and resource links
- Slide shows
- Final Assessment

Pricing Options