

PRODUCT INFO

NEWS FROM CARQUEST



STOP! There are few parts that mean more to safety in an automobile than the switch that activates the brake lights. Proper operation is imperative to the safety of not only the occupants of the vehicle, but those following in other cars and trucks. When a customer comes in and doesn't have brake lights this job usually requires troubleshooting. Is it a bulb, a wire, or the switch? After checking the bulb and the fuse (How often is that overlooked?), the next step is to check the switch.

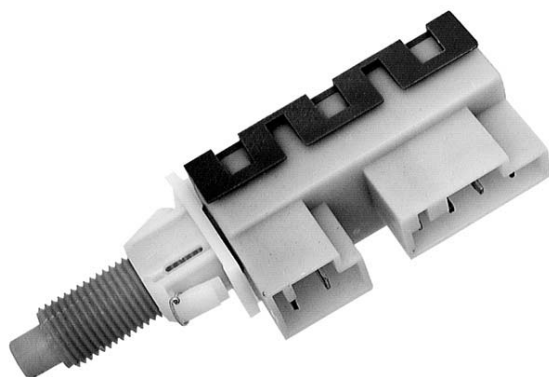
In today's vehicles the brake light switch may perform more than one function and may have multiple wire sets and connectors. It used to be power in and power out. There was one wire always live, and the other would receive power when the pedal was depressed. Today, many switches have a cruise control release function that has no power until the cruise is activated. Most have a torque converter clutch release function. Some brake light circuits only activate a module that turns on the lights. A technician should consult a wire diagram before testing any circuit.

With many sensors and switches only having a 5-volt reference or milliamps of current, a test light may not show power or may draw too much and damage expensive modules. For these reasons **testing should only be done with a voltmeter.** Consult a reliable reference for the specifications on the circuit to be

tested. Remember that most of these switches operate in a normally open position when installed because the pedal holds the button in. However, some may be activated in reverse and be normally closed. This is the most common cause of a new part being thought to be bad!

When installing a new brake light switch remember that most are adjustable. The lights should come on as soon as the pedal starts its travel. If your switch is adjustable activate it several times and don't forget to test drive the vehicle to make sure the vibration doesn't change the setting. Some clip into place such as Chrysler minivans. These clips need to be checked for full engagement or they will come loose and the customer will be back or worse may have an accident. Ford uses clips on some that must be reused and therefore require care when changing.

Carquest has extensive coverage in both domestic and foreign vehicle stop light switches. If your auto parts store does not have the switch you need, ask them to order it. We will deliver the part in twenty-four hours. In many cases this is faster than the dealer could possibly supply the part. All of our parts meet or exceed fit, form and function of the O.E. parts, and usually at a better price. So the next time a customer comes in without brake lights, remember Carquest has the switch you need. And if it's a bad socket, we have those too!



SLS-254



VOLTMETER



New BDM Cartridges Announced



Body 2004

The BDM Body 2004 Cartridge has been released. This cartridge offers improved diagnostic abilities for Body and Airbag systems plus expanded model year coverage through 2004 model year for GM, Ford and Chrysler.

Order cartridge part # BXBD33502

Customers who already own the BODY cartridge may order an affordable CD update with new label (part # BXBD33502A). Contact your local distributor or Blue Streak Electronics for pricing.

When ordering the CD update you must also include the serial number of your existing BODY cartridge. This can be found under "Cartridge ROM Check", see manual for details.

For customers who have already purchased the BODY 2004 update between January 3rd 2005 to June 30th 2005 and were provided a coupon letter, a download update with your serial number already embedded has been posted to our website www.bsecorp.com.



Chassis 2004

The BDM Chassis 2004 Cartridge has been released. This cartridge offers improved diagnostic abilities and expanded model year coverage through 2004 model year for GM, Ford and Chrysler. Chassis systems included ABS, Traction, Steering and Ride controls, but diagnostic coverage may vary by manufacturer.

Order cartridge part # BXBD33003

Customers who already own the Chassis 2002 cartridge may order an affordable CD update with new label (part # BXBD33003A). Contact your local distributor or Blue Streak Electronics for pricing.

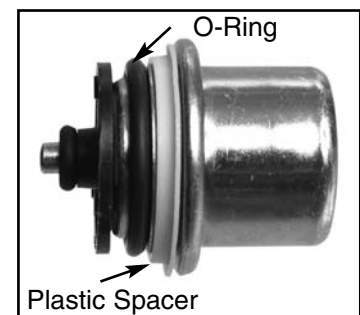
When ordering the CD update you must also include the serial number of your existing Chassis 2002 cartridge. This can be found under "Cartridge ROM Check" see manual for details. Owners of the original Chassis cartridge released in 2000, simply titled "CHASSIS" not "CHASSIS 2002", cannot order the CD update and must order a new cartridge.

For customers who have already purchased the CHASSIS 2004 update between January 3rd 2005 to June 30th 2005 and were provided a coupon letter, a download update with your serial number already embedded has been posted to our website www.bsecorp.com.



FUEL PRESSURE REGULATOR

Fuel Pressure Regulator PR203 may appear to have a cracked sealing o-ring when in fact it does not. It is a plastic spacer that has a split in it to allow it to be placed around the regulator. IT DOES NOT PERFORM ANY SEALING FUNCTION! The plastic spacer was put there to prevent the O-Ring from being placed too far down the regulator where it would not seal properly. There is nothing wrong with this part!





temperature controls



The Automotive Air Conditioning Lubricant Enhancer



After reviewing the results of extensive testing (test and performance results available on the 4S web site) performed by an OE laboratory to our specifications, Four Seasons now endorses the use of ICE32 and we are adding 6 SKU's to our product offering. See attachment for part numbers.

What is ICE32?

ICE32 is a revolutionary treatment for automotive air conditioning systems. Professionally installed, this treatment dramatically and instantly improves the effectiveness of the automotive air conditioning system.

How does ICE32 Work?

This breakthrough in lubrication technology seeks out and adheres to metal surfaces within the system. It's polarized and modified molecules circulate through air conditioning systems, providing better flow and improved cooling performance. By reducing friction and thus reducing wear on internal moving parts, these unique properties of ICE32 actually extend air conditioning system life.

Part # 419349 - ICE32 Starter Kit

- Tru View LEXAN display
- 25 Consumer brochures
- 1 Wall poster
- 2 Window / Door stickers
- ICE32 testing information



Part # 419348 - Manual Injector with instructions

- Heavy Duty injector with external capacity markings
- 10" hose with check valve and R12 adapter

Benefits and Characteristics

ICE32 is compatible with R-134a automotive climate control systems

- Reduces friction
- Keeps compressors clean
- Prevents oxidation and sludge formation
- Improves ring seal
- Operates over a broad temperature range
- Non-corrosive and environmentally safe
- Excellent heat exchange properties
- Readily mixes with HFC refrigerants
- Soluble in mineral oils, alkylbenzenes, polyolesters, naphthenes and refrigeration lubricants
- Compatible with elastomer seals EPR, EPDM, HNBR, Polysulfates and Silicones

Part # 419347 - Aerosol Installation Kit with instructions

- Heavy Duty side tap with shut-off valve
- 12" Dispensing hose with straight and 90° fittings
- Low pressure gauge



Part # 419344 - qty. 12

1.5 oz Non-Aerosol

Part # 419345 - qty. 12

3 oz Aerosol (2 oz ICE32 - 1 oz R-134a)

Part # 419346 - qty. 6

8 oz Non-Aerosol